

# WIRING INSTRUCTIONS

TITLE

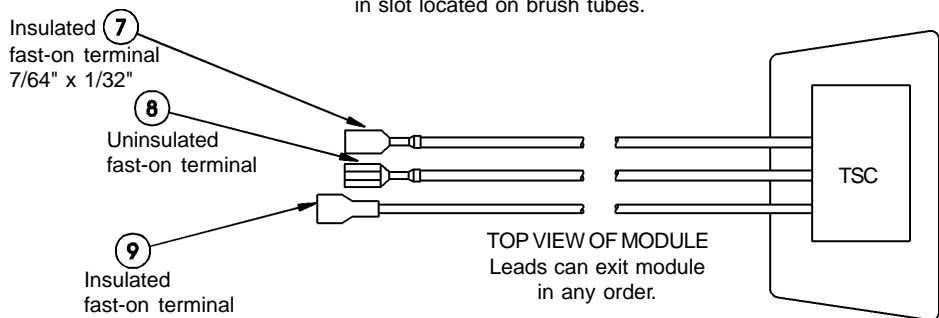
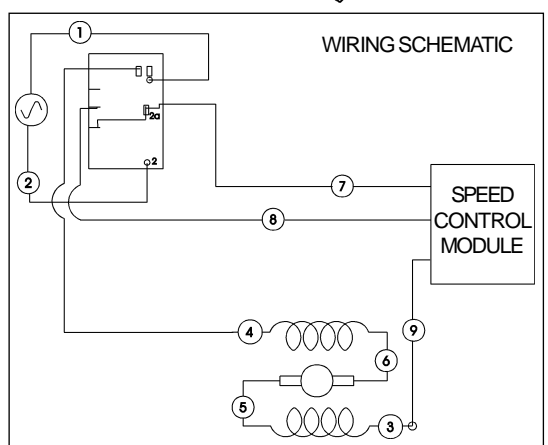
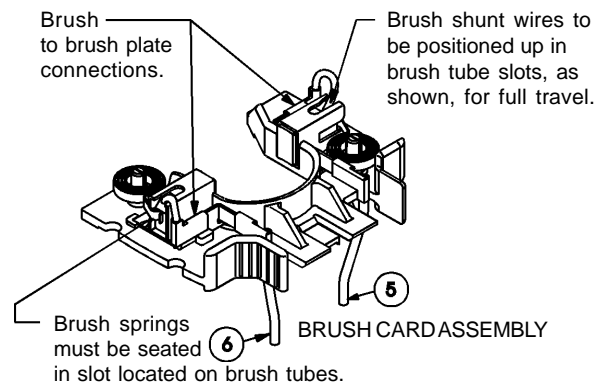
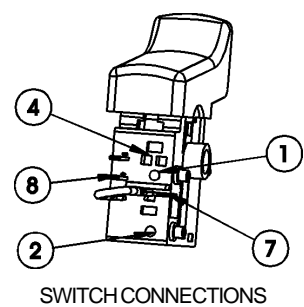
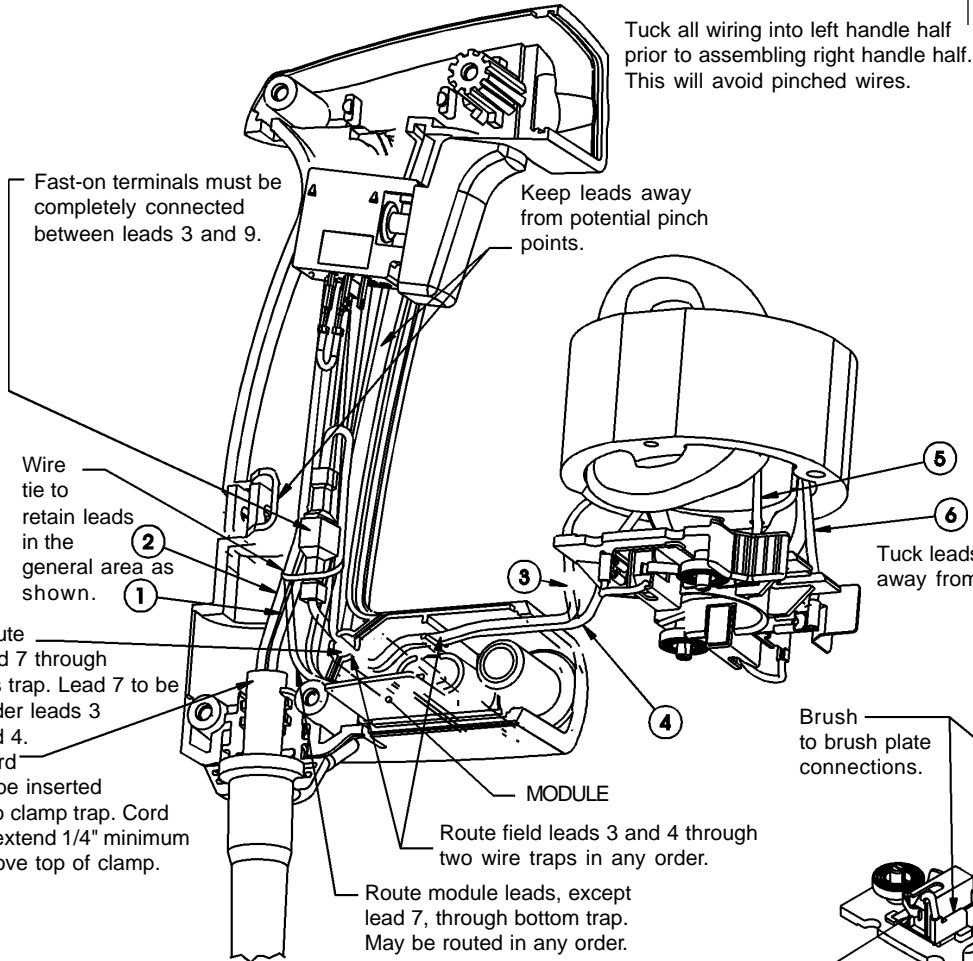
**THUNDERBOLT™ ROTARY HAMMERS**

**BULLETIN  
58-01-1555**

**MILWAUKEE ELECTRIC TOOL CORP. 13135 WEST LISBON RD. BROOKFIELD, WIS.**

DATE  
May '99

Tuck all wiring into left handle half prior to assembling right handle half. This will avoid pinched wires.



## WIRING SPECIFICATIONS

Wire No.	Wire Color	Origin or Part No.	Gauge	Length	Terminals, Connectors and End Wire Preparation
1	White	Cord			To Switch
2	Black	Cord			To Switch
3	Red	Field			To Lead 9
4	Red	Field			To Switch
5	Yellow	Field			Brush Holder
6	Black	Field			Brush Holder
7	Black	Module			To Switch
8	Black	Module			To Switch
9	Blue	Module			To Lead 3

**NOTE:**  
All lead lengths are before stripping.  
All leads must be held to ± 1/8".